



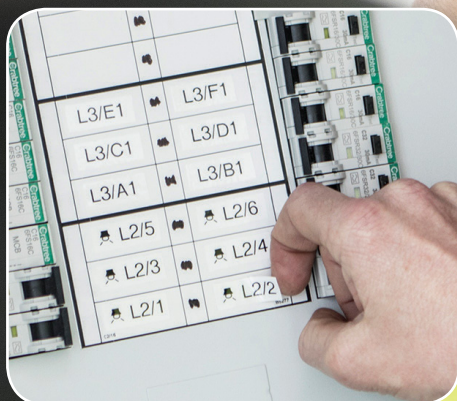
## Industrial Labeller

A purpose built labeller to add to your toolbox. Create long lasting, durable and easy to peel labels for components in electrical environments.

- Cable, Faceplate and Sequential Numbering shortcuts for quick function access
- 200 Symbols including electrical, security, audio/visual and safety symbols
- Includes tape cassette, AC adapter and carry case
- Heavy duty labels resistant to fade, abrasion and extreme temperatures



The PT-E110VP and its durable tape supplies help ensure clear identification for cabling, panels and installations.



# P-touch E110VP

Create long lasting labels in various colour combinations and widths with this industrial labeller. With dedicated functions to make common labelling tasks quick and easy, and with everything supplied in a hard carry case, the PT-E110VP is an invaluable tool for electricians and other professional trades.



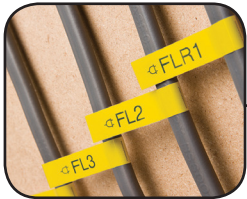
### Fast 20mm / second print speed

Gets the job done quickly by printing each label in just a few seconds.



### Cable wrap

Identify cables quickly with easy-to-read labels.



### Cable flag

Select your cable diameter to print the correct length of label.



### Dedicated number keypad

Speeds up the input of numeric labels.



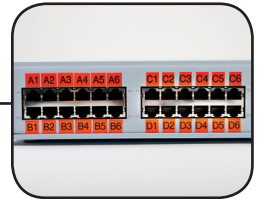
### Graphic display

Easily view symbols and preview your label before printing.



### Face plate

Label socket outlets, network points and telephone extension faceplates for quick identification.



### Sequential numbering

Print labels containing a sequence of numbers or letters.



### 200 built-in symbols

Includes common electrical, datacom, AV, security and safety symbols.

## P-touch laminated labels – designed to last

Brother P-touch laminated TZe tapes are available in many different colours and sizes. The thermal transfer ink is sandwiched between two protective layers of PET (polyester film), protecting the text against the effects of liquids, abrasion, temperature, chemicals and sunlight. As the labels have been tested to the extreme, you can be confident of a professional quality label that has been designed to last.



Laminated



Temperature Resistant



Water Resistant



Fade Resistant



Abrasion Resistant



Chemical Resistant



Easy Peel

# PT-E110VP Features / Specifications

## Hardware

Housing dimensions (mm)	111(w) x 58(d) x 204(h)
Housing weight	400g
Tape size	TZe tape: 6, 9, 12mm
Print resolution	180 dpi for crisp, legible text
Max. label length	300mm
Max. print height	9mm for easy-to-read labels
Max. print speed	20mm / sec
Cutter type	Built-in manual label cutter
Keyboard type	PC layout QWERTY keyboard with dedicated numeric keypad
Number of keys	60
LCD display	16 character graphic LCD with real preview feature
LCD size	58 mm x 23 mm
Print preview	Yes
Text buffer	Max 80 chrs
Label memory	720 chrs (9 files x 80 chrs)
Power	Requires 6 x AAA batteries (not supplied) AC adapter (included)

## Items Included

Items included	PT-E110 labelling machine AC adapter (AD-24ES) 9mm black on white Flexible-ID tape cassette (8m) Carry case User guide
----------------	--

## Supplies

TZe Tape cassettes	6, 9, 12mm
--------------------	------------

## Built-in software

Built-in fonts	1
Built-in symbols	200 symbols including electrical, security, audio/video and safety symbols
Character sizes	3 sizes
Character widths	3 widths (extended, medium, condensed)
Font styles	10
Frames	1
Underline	Yes
Max. number of lines	2
Horizontal alignment	Automatic length labels: left aligned Pre-set length labels: centre aligned
Pre-set format (auto format)	None
Tape length setting	Yes (30-300 mm)
Tape margin settings	Narrow, half, full, chain print
Tab function	Yes
Labelling functions	General, Cable Wrap, Cable Flag, Faceplate and Sequential Numbering
Numbering	Yes (1-50)
Mirror Printing	No
Vertical Printing	Yes
Copy (repeat) printing	Yes (1-50)
Print preview	Yes (graphic preview)
Auto power off	Yes (approx. 5 min)
Unit change	Yes (inch/mm)
Language change	21 languages (English, German, French, Spanish, Portuguese, Portuguese-Bra, Italian, Dutch, Danish, Norwegian, Swedish, Finnish, Hungarian, Czech, Polish, Romanian, Slovene, Slovak, Croatian, Turkish, Malay)

Label images shown are for illustrative purposes only and some aspects may not be reproducible on this model.  
Product specifications may be subject to change.

**brother**  
at your side

### Brother International South Africa

96 Sovereign Drive, Route 21 Corporate Park, Irene  
Tel: +27 (0) 12 - 345 5332 Fax: +27 (0) 12 - 345 3886

[www.brother.co.za](http://www.brother.co.za) <http://support.brother.com>

